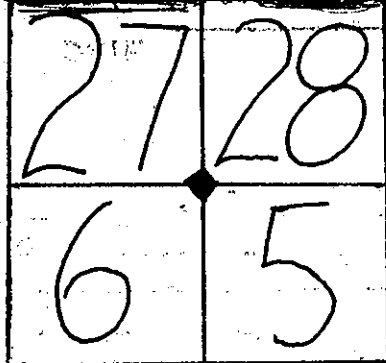


GOVERNMENT ~~LOTS~~ <sup>211x5q</sup>

TILLAMOOK COUNTY REWITNESS #872



SEC.  $\frac{5}{8}$  E: W. 1/4 COR. T 5 S R 10 W., WM.

HISTORICAL: 1872 G. L. O. Pg. 55 5510 SET 12 X 8 X 6 STONE

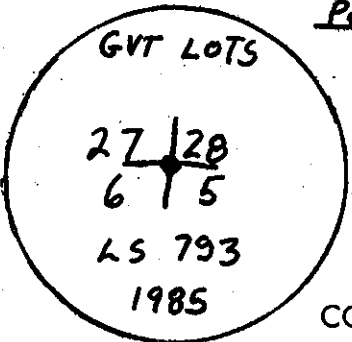
BK.	Pg.		
53	190		
AMA4	72		

CONDITION Good FOUND, 10" X 9" X 6" (ORIGINAL) STONE MARKED XXXII G. L. O. Pg. 55 5510


COMMENTS:

REWITNESS

1 SET 1 1/2" IRON PIPE WITH 3" BRASS CAP IN 10" CONCRETE CYLINDER @  
 POSITION OF FD. 10" X 9" X 6" <sup>ORIGINAL</sup> STONE MARKED XXXII G. L. O. Pg. 55 5510  
 \* 60" Hat Section IN FENCE LINE N. 44° W. 31 1/2 FEET



NEW ACCESSORY:

* 27" SPRUCE	N. 69° E. 34' 48"	L 28 B.T CS
* 15" SPRUCE	S. 44° E. 18'	L 5 B.T CS

COMMENTS: THIS CORNER IS LOCATED ± 2' SOUTH OF  
 AN OLD E-W FENCE LINE @ THE NORTH EDGE OF A PASTURE. LAYED  
 FOUND 10" X 9" X 6" STONE ALONGSIDE MONUMENT.

IN THE PRESENCE OF: DAN McNUTT ALDUORAK

DATE: 4-15-85 PHOTO#:

\* = County corner tag affixed.

TITLE